



Common moths of REGUA



Amaxia consistens
Arctiidae

Cosmosoma auge
Arctiidae

Viviennea salma
Arctiidae

Crinodes bellatrix
Notodontidae

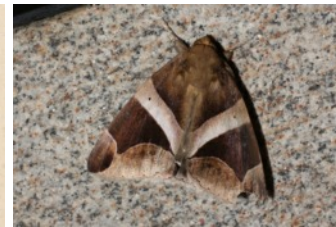


Dinia eagrus
Arctiidae

Dysschema hypoxantha
Arctiidae

Rosema thalassina
Notodontidae

Ascalapha odorata
Noctuidae

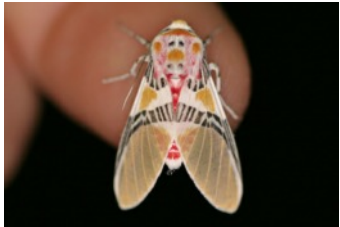


Dysschema sacrificata
Arctiidae

Elysius conspersus
Arctiidae

Ceroctena amynta
Noctuidae

Dysgonia expediens
Noctuidae



Idalus herois
Arctiidae

Neritos pectinata
Arctiidae

Eusceptis splendens
Noctuidae

Letis buteo
Noctuidae

Trichophassus giganteus
Hepialidae

Langsdorfia franckii
Cossidae



Ordishia rutilus
Arctiidae

Viviennea moma
Arctiidae

Sosxetra grata
Noctuidae

Thysania agrippina
Noctuidae

Morpheis pyracmon
Cossidae

Perola villosipes
Limacodidae

There are approximately 140,000 described species of moths worldwide, scattered over 100 families, with thousands of species yet to be described. This leaflet illustrates 54 of the more common and distinctive moths (excluding Sphingidae) representing 13 of the families that have been recorded at the REGUA lodge.

The moth wall was built in October 2012 and provides a great opportunity for visitors to see a wide range of moth species, plus other insects, geckos and amphibians that are attracted to the lights. Surprisingly the lights also sometimes attract a few species of day-flying butterflies, especially hairstreaks.

REGUA is keen to establish a comprehensive list of moth species present in the reserve, so please submit any records and photographs of moths that are not on this leaflet to Jorge Bizaro (bizlep@gmail.com).



Podalia fuscescens
Megalopygidae

Trosia nigropunctigera
Megalopygidae



Adeloneivaia boisduvali
Saturniidae

Copiopteryx semiramis
Saturniidae



Argyrotope muricolor
Geometridae



Glennia bipennaria
Geometridae



Diaphania indica
Crambidae

Maruca vitrata
Crambidae



Dysdaemonia brasiliensis
Saturniidae



Eacles imperialis
Saturniidae



Iridopsis validaria
Geometridae



Leuciris fimbriaria
Geometridae



Artace cribraria
Lasiocampidae

Apatelodes pandara
Apatelodidae



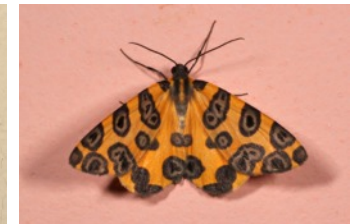
Hylesia nanus
Saturniidae



Hyperchiria incisa
Saturniidae



Nepheloleuca politia
Geometridae

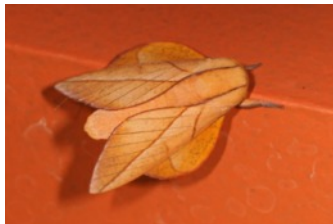


Pantherodes colubraria
Geometridae



Colla rhodope
Apatelodidae

Epia muscosa
Bombycidae



Oiticella convergens
Saturniidae



Rhescyntis hippodamia
Saturniidae



Phrygonis incolorata
Geometridae



Semaepus varia
Geometridae



Automeris illustris
Saturniidae

Automeris melanops
Saturniidae



Rothschildia aurota
Saturniidae



Syssphinx molina
Saturniidae



Sericoptera mahometaria
Geometridae



Synchlora gerularia
Geometridae